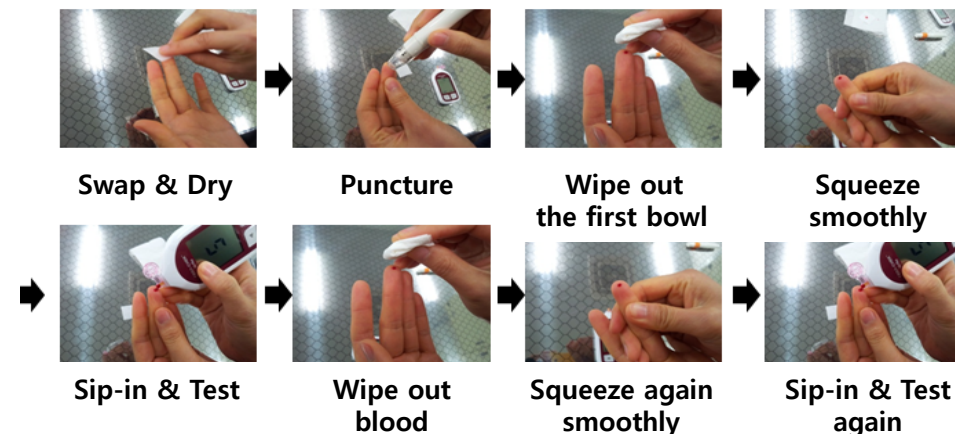


Troubleshooting for Capillary Blood

- **CERA-CHEK Hb Plus uses only 1uL blood. Therefore, there is strong possibility of mixing with body fluid when squeezing the finger.**
 - Use enough blood, but don't squeeze the finger.
 - Warm the finger tip before puncture and use 23 gauge lancet
 - When you use depth adjustable 'lancing device', please use 4 ~ 5 or more.
 - Squeeze very slowly and smoothly from the far end of finger
- **CERA-CHEK utilizes electrochemistry where the oxygen concentration deteriorate the reaction**
 - Test immediately within 5 seconds, to avoid possible changes of oxygen concentration of the sample. The new & fresh capillary blood should be used for each new testing. Don't re-dose (re-use) the blood for the new test.



Troubleshooting for Venous Blood

- **As the same as capillary blood, venous blood testing should be avoid possible oxygen contact.**
 - Use the samples contained in a vacuum tube only. (See next page for available tubes)
 - Don't use frozen samples or hemolysis sample
 - Be sure the cap of the vacuum tube is closed tightly.
 - Use syringe to uptake venous blood in the vacuum tube (Fig. 1)
- **Don't inject blood using syringe (Fig. 2) or inject sample directly from a tube.**
 - Drop the blood on a clean surface (Fig. 3), and then inject sample to the strip. (Fig. 4)
- **Be careful, rolling the vacuum tube increases the oxygen concentration of the blood.**

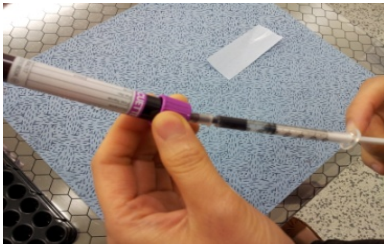


Fig. 1: Take sample using syringe



Fig. 2: Don't inject blood using syringe



Fig. 3: Drop sample on a clean surface



Fig. 4: Inject sample and get the result

Blood Collection Tubes

- Usable tube types

- EDTA
- Heparin

- Not usable tube types

- Sodium Fluoride